



Arbo Engineering  
 3 White Horse Rd, Unit 4  
 North York, On M3J3G8  
 Canada

Tel (416) 636-7057 Fax (416)-630-9135  
 Email [info@arbo-feeders.com](mailto:info@arbo-feeders.com)  
<http://www.arbo-feeders.com>

## Arbo **Multiline** Integral Feeder Controller

The new Arbo **Multiline** gravimetric controller is designed for multiple component application, capable of controlling up to eight gravimetric feeders (LIW or belt), in continuous or batching mode.



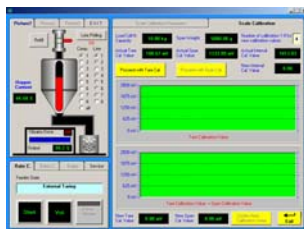
Multiline 4

- Wall mount enclosure 24" x 24" x 20" for a 2 to 4 feeder controller (as shown on left)
- Free-standing enclosure 72" x 24" x 20" for a 5 to 8 feeder controller
- Complete control system for four LIW feeders
- Man Machine Interface (MMI) with colour touch screen, 11.5" diagonal, running WINDOWS 2000 PRO
- Allows easy feeder calibration and displays the process parameters in real time
- Includes all SCRs, load cell amplifiers and power supplies – 19" rack mount
- Guide value analog input allows ramping all feeders up or down together
- Includes relays for refill and alarms
- Programmable master-Slave interlocks between feeders
- Optional MLNET card; Ethernet/internet Gateway
  - Allows remote control of a Multiline using an Internet Browser
  - Allows communications with an A/B PLC via a RS485 port

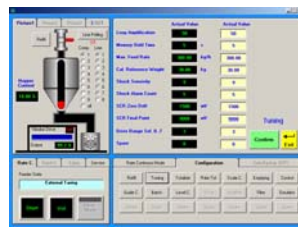


A powerful 32 bit processor unit, assisted by a 32 bit time processing unit, makes it possible to control all eight feeder simultaneously with the proven high precision integral technology. Superb 2 Sigma accuracies at extremely short sampling times are obtainable, making this controller the choice unit for fast processes.

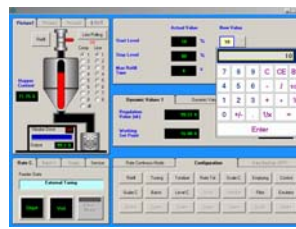
The following screens show some of the controller's many features:



Scale Calibration Page



Feeder Configuration Page



Refill Setting Page



Typical Extruder Control Page